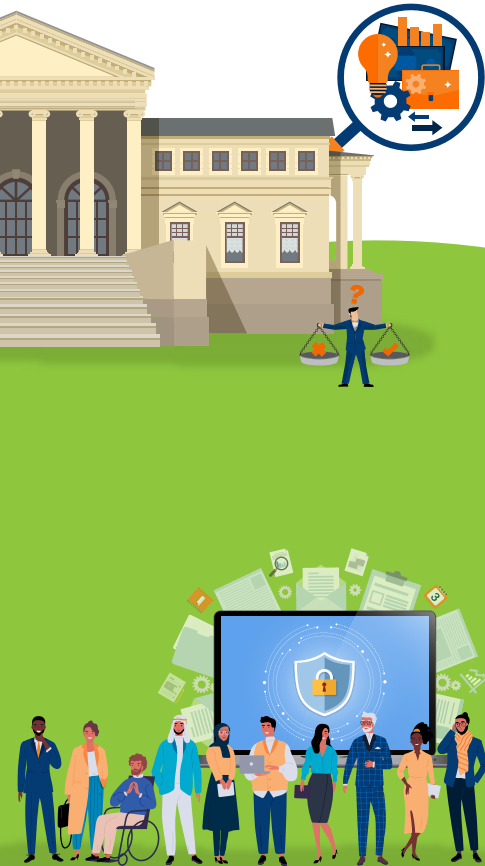


**Aim to do good for
your wealth and the planet.**

ESG

ENVIRONMENTAL | SOCIAL | GOVERNANCE



Invest in

Mirae Asset ESG Sector Leaders Fund of Fund

An open-ended fund of fund scheme predominantly investing in Mirae Asset ESG Sector Leaders ETF

Why invest in ESG Sector Leaders Fund of Fund?



Invest in companies with lower business risk and higher sustainable growth opportunity



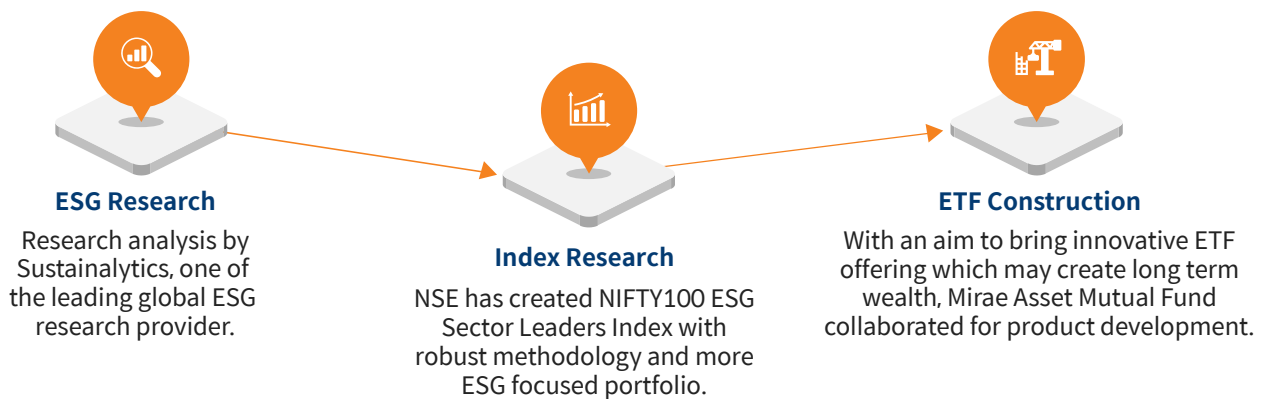
Avoid companies with major controversies



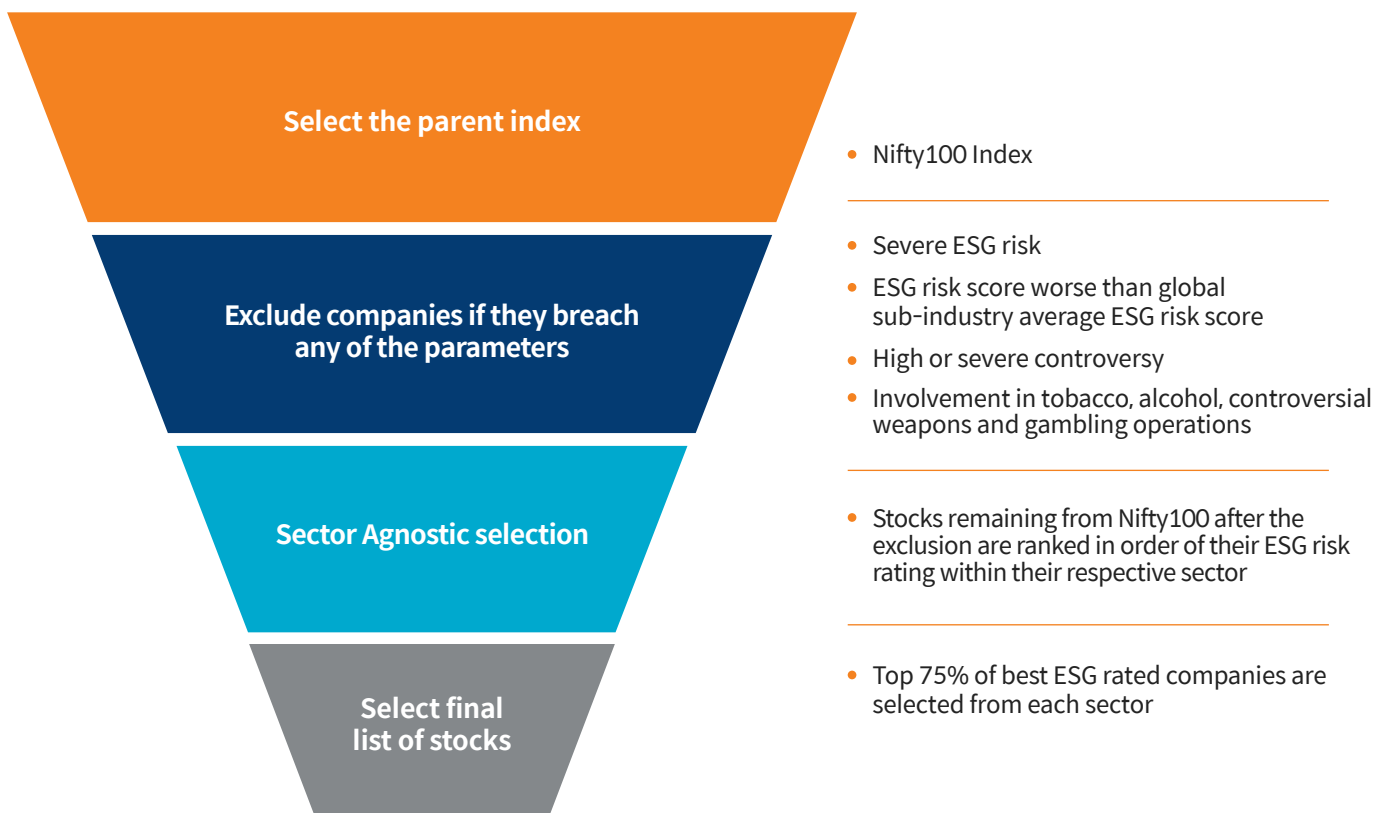
Aim to grow wealth and contribute to community with sustainable investing

Mirae Asset ESG Sector Leaders Fund of Fund

A product created with expertise of multiple specialized entities.



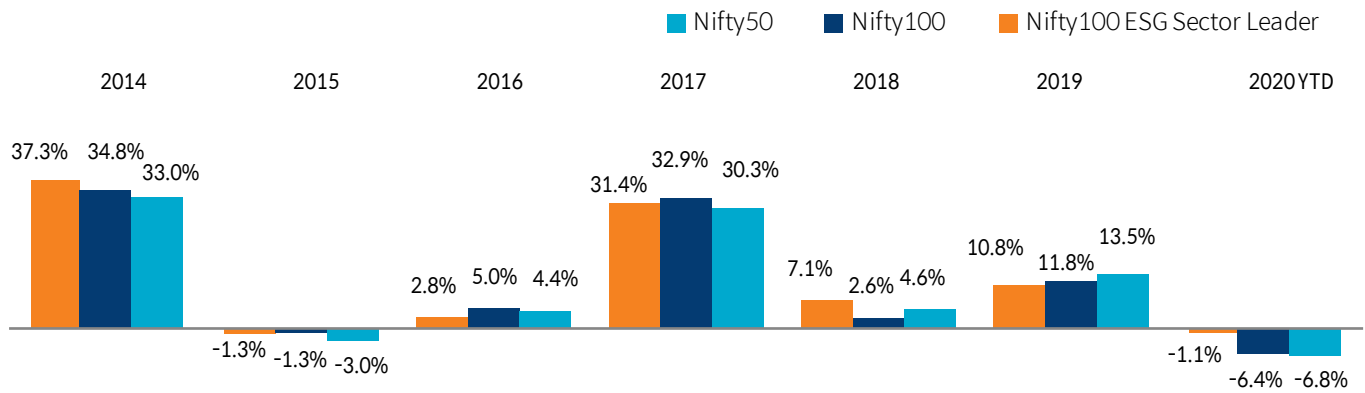
How is Nifty100 ESG Sector Leader Index constructed?



A robust new methodology aims to create a portfolio of companies having superior ESG performance, no major controversy and no involvement in questionable businesses.

Source: NSE Indices Limited & Sustainalytics

Sustainable ESG portfolio has delivered better performance



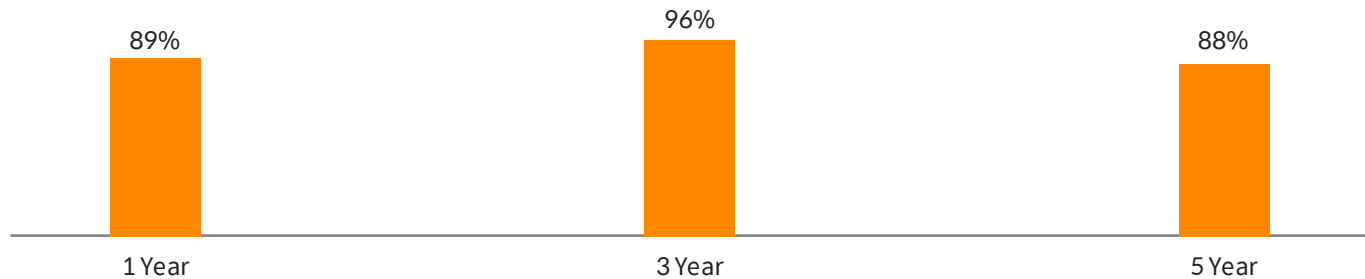
Returns

Since Inception	Nifty100 ESG Sector Leader	Nifty100	Nifty50
10 Years	12.0%	10.8%	10.3%
5 Years	9.5%	8.5%	8.5%
3 Years	8.5%	5.2%	6.0%
1 Years	3.7%	-1.0%	-1.0%
6 months	29.5%	31.0%	31.5%
3 months	8.7%	9.0%	9.6%

NSE data as on September 30, 2020, Past performance may or may not sustain in future. The index return are in Total Return Variant.

Has outperformed large cap indices and funds over several periods

% of large-cap funds outperformed by NIFTY100 ESG Sector Leader Index



ESG Sector leader has outperformed more than 80% of large-cap fund over 1 yr Investment Horizon.

NSE Indices Limited Data as on September 30, 2020, Past performance may or may not sustain in future. The index return are in Total Return Variant. Large-cap funds represents 27 regular-growth funds, Data sourced from ACE MF, September 30, 2020.

The data/performance provided is pertaining to the Index and does not in any manner constitute performance of any scheme of Mirae Asset Mutual Fund. There is no guarantee or assurance of returns/income generation/capital protection in any scheme of the Fund.

Top 10 Sector Holdings

Sectors	NIFTY 100 ESG Sector Leader	Nifty100	Nifty50
Financial Services	27.9%	31.5%	33.3%
IT	21.9%	15.4%	16.8%
Consumer Goods	13.1%	14.3%	11.9%
Oil & Gas	13.1%	15.3%	16.7%
Automobile	5.4%	5.5%	5.8%
Telecom	3.6%	2.1%	2.1%
Pharma	3.5%	5.5%	4.0%
Construction	3.3%	2.1%	2.3%
Cement & Cement Prod.	3.1%	2.3%	2.1%
Metals	1.8%	2.1%	2.2%

Top 10 Stock Holdings

Name	Weight (%)
Reliance Industries Ltd.	11.58
Infosys Ltd.	11.14
HDFC Bank Ltd.	9.52
HDFC	8.65
Tata Consultancy Services Ltd.	7.90
Kotak Mahindra Bank Ltd.	5.60
Hindustan Unilever Ltd.	5.57
Larsen & Toubro Ltd.	3.32
Bharti Airtel Ltd.	3.05
Axis Bank Ltd.	2.89

Source: NSE, Portfolio as on September 30, 2020

Mirae Asset ESG Sector Leaders Fund of Fund



New Index by NSE which incorporates the latest research methodology by Sustainalytics, one of the global leaders in ESG research.



Index comprises of companies which have scored well on management of Environmental, Social and Governance (ESG) Factors.



Avoid Investments in companies with controversies on E, S and G pillar.



Compared against the best of the world.



Aims to generate higher returns with lower volatility and drawdowns.

IDEAL INVESTOR PROFILE



Goal:
Aim for wealth creation



Investment Time Horizon:
3+ years



Risk Profile:
Aggressive

FUND FACTS



Benchmark:
Nifty100 ESG Sector Leaders Index (TRI)



Plans: Regular Plan and Direct Plan with Growth Option and Dividend Option. (Pay-out & Re-investment)



Fund Manager:
Ms. Bharti Sawant



Minimum Investment Amount: ₹5000/- and in multiples of ₹1/- thereafter.



SIP Amount:
Monthly and Quarterly: ₹1,000/- (and in multiples of ₹1/-)

NSE Indices Ltd Disclaimer: NSE INDICES LIMITED do not guarantee the accuracy and/or the completeness of the Nifty100 ESG Sector Leaders Index or any data included therein and NSE INDICES LIMITED shall have not have any responsibility or liability for any errors, omissions, or interruptions therein. NSE INDICES LIMITED does not make any warranty, express or implied, as to results to be obtained by the Issuer, owners of the product(s), or any other person or entity from the use of the Nifty100 ESG Sector Leaders Index or any data included therein. NSE INDICES LIMITED makes no express or implied warranties, and expressly disclaims all warranties of merchantability or fitness for a particular purpose or use with respect to the index or any data included therein. Without limiting any of the foregoing, NSE INDICES LIMITED expressly disclaim any and all liability for any claims, damages or losses arising out of or related to the Products, including any and all direct, special, punitive, indirect, or consequential damages (including lost profits), even if notified of the possibility of such damages.

Sustainalytics Disclaimer: This [publication/ report/ section] contains information developed by Sustainalytics. Such information and data are proprietary of Sustainalytics and/or its third party suppliers (Third Party Data) and are provided for informational purposes only. They do not constitute an endorsement of any product or project, nor an investment advice and are not warranted to be complete, timely, accurate or suitable for a particular purpose. Their use is subject to conditions available at <https://www.sustainalytics.com/legal-disclaimers>.

Product Labelling

Mirae Asset ESG Sector Leaders Fund of Fund is suitable for investors who are seeking*

- To generate long term capital appreciation/income
- Investments predominantly in units of Mirae Asset ESG Sector Leaders ETF

*Investors should consult their financial advisers if they are not clear about the suitability of the product

RISKOMETER



Investors understand that their principal will be at High Risk

Follow us on



Mutual Fund investments are subject to market risks, read all scheme related documents carefully.



1800-2090-777 (Toll Free) Mon-Sat: 9 am-6 pm



customercare@miraeasset.com



Contact your financial advisor for details