

NFO

MIRAE ASSET | ETF



Built on **Value.**
Driven by **Fundamentals.**

Invest in
**Mirae Asset Nifty 500
Value 50 ETF**

(An open-ended scheme replicating/tracking Nifty 500 Value 50 Total Return Index)

NFO opens on: 9th March, 2026 | NFO closes on: 16th March, 2026
Scheme re-opens on: 23rd March, 2026

What is Value Investing

Value investing is an investment strategy where investors buy stocks that appear to be undervalued compared to their true (intrinsic) value.

Key Principles of Value Investing



Source: Mirae Asset Internal Research;

Index Methodology : Nifty 500 Value 50 Index

1 Eligible Universe

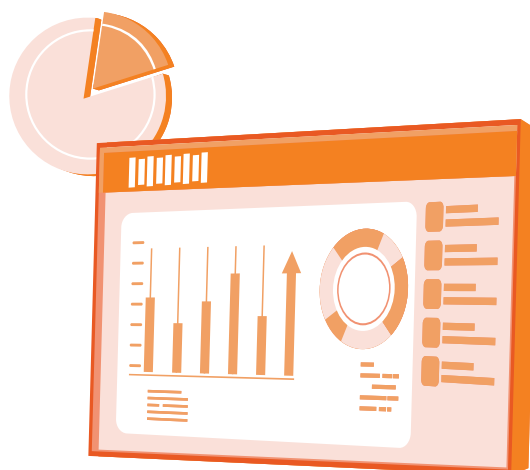
- Stocks forming part of the Nifty 500 Index at the time of review

3 Index Rebalancing & Weighing

- Stock weight capped at lower of 5% or 3× free-float weight
- Sector exposure capped at maximum 25% of index weight
- Index rebalanced and reconstituted semi-annually in June and December

2 Selection Criteria

- 50 stocks are based on four core valuation parameters, giving equal weightage to each factor:
 - Earnings to Price (E/P) valuation metric
 - Book Value to Price (B/P) valuation metric
 - Sales to Price (S/P) valuation metric
 - Dividend Yield return metric



Source: Nifty Indices Pvt.Ltd. Data as on Feb 28, 2026. Refer https://www.niftyindices.com/Methodology/Method_NIFTY_Equity_Indices.pdf for further details

Sectoral Classification: Nifty 500 Value 50 Index v/s Nifty 500 Index

Sector	Nifty 500 Value 50 Weights (%)	Nifty 500 Weights (%)	Underweight/Overweight (%)
Financial Services	25.5	32.1	-6.6
Oil, Gas & Consumable Fuels	25.0	7.7	17.3
Metals & Mining	21.1	4.2	16.8
Power	11.3	3.1	8.2
Construction Materials	4.8	2.1	2.7
Automobile and Auto Components	4.7	7.1	-2.4
Chemicals	2.5	1.9	0.6
Services	2.4	1.8	0.6
Healthcare	2.4	6.1	-4.6
Construction	1.5	2.8	-1.9
Media, Entertainment & Publication	1.0	0.1	0.4
Information Technology	0.5	8.4	-8.4
Fast Moving Consumer Goods	-	6.0	-6.0
Capital Goods	-	5.9	-5.9
Telecommunication	-	3.5	-3.5
Power	-	3.1	-3.1
Consumer Durables	-	2.6	-2.6
Realty	-	1.0	-1.0
Textiles	-	0.2	-0.2
Diversified	-	0.1	-0.1
Total	100.0	100.0	

Nifty 500 Value 50 Index offers broader sector diversification with higher exposure to Oil, Gas & Consumable Fuels & Metals & Mining sectors compared to Nifty 500 Index

Source: Data as on Feb 19, 2026; NSE Indices Limited. Past performance may or may not sustain in future. The sector(s) /stock(s)/issuer(s) mentioned in this presentation do not constitute any research report/recommendation of the same and the Fund may or may not have any future position in these sector(s) /stock(s)/issuer.

Performance of Nifty 500 Value 50 Index

Period	Smart Beta Factors						Market Cap Indices	
	Nifty500 Value 50 Index	Nifty50 Value 20 Index	Nifty50 Equal Weight Index	Nifty200 Alpha 30 Index	Nifty100 Low Volatility 30 Index	Nifty200 Quality 30 Index	Nifty 500 Index	Nifty 50 Index
20 Years	16.7%	-	13.0%	16.1%	15.1%	15.7%	12.7%	12.4%
15 Years	15.5%	14.3%	12.7%	20.2%	14.9%	14.8%	13.2%	12.3%
10 Years	22.5%	17.4%	16.2%	22.5%	15.7%	14.1%	16.0%	15.0%
7 Years	25.2%	15.9%	17.2%	20.8%	15.2%	13.3%	15.7%	14.2%
5 Years	31.1%	15.1%	17.5%	22.3%	15.0%	13.0%	14.9%	12.9%
3 Years	37.6%	14.0%	20.5%	27.9%	18.0%	14.6%	18.0%	14.6%
2 Years	17.1%	4.4%	10.4%	6.5%	7.9%	5.6%	8.4%	8.3%
1 Year	42.2%	9.6%	21.3%	24.2%	15.9%	12.7%	17.6%	15.1%
YTD 2026	8.8%	-2.7%	-0.6%	2.0%	-2.9%	-5.6%	-2.8%	-3.5%
6 Months	24.9%	3.8%	6.7%	4.5%	1.5%	-0.5%	3.4%	3.4%
3 Months	12.8%	-1.6%	-0.3%	-1.6%	-2.5%	-5.2%	-3.1%	-3.8%
1 Month	5.8%	-2.5%	1.3%	4.4%	0.3%	-3.9%	0.5%	-0.5%

Source: Data as on Feb 28, 2026.; NSE Indices Limited, **Past performance may or may not sustain in future.** The index return is in Total Return Variant. The data shown above pertains to the Index and does not in manner indicate performance of any scheme of the Fund. Alpha is represented by Nifty200 Alpha 30 Index, Low Volatility and is represented by Nifty100 Low Volatility 30 Index, Quality is represented by Nifty200 Quality 30 Index, Value 50 is represented by Nifty500 Value 50 Index, Value 30 is represented by Nifty200 Value 30 Index, Value 20 is represented by Nifty50 Value 20 Index, Equal Weight represented as Nifty50 Equal Weight Index

Calendar Year performance of Nifty 500 Value 50 Index

Period	Value 50	Nifty 500	Nifty 50
2025	16.9%	7.8%	11.9%
2024	20.2%	16.2%	10.1%
2023	62.6%	26.9%	21.3%
2022	23.2%	4.2%	5.7%
2021	56.4%	31.6%	25.6%
2020	8.5%	17.9%	16.1%
2019	-13.7%	9.0%	13.5%
2018	-26.2%	-2.1%	4.6%
2017	47.0%	37.7%	30.3%
2016	25.1%	5.1%	4.4%
2015	-7.2%	0.2%	-3.0%
2014	78.9%	39.3%	32.9%
2013	-14.0%	4.8%	8.1%
2012	32.1%	33.5%	29.4%
2011	-37.7%	-26.4%	-23.8%
2010	30.9%	15.3%	19.2%
2009	133.0%	91.0%	77.6%
2008	-56.7%	-56.5%	-51.3%
2007	109.0%	64.5%	56.8%

Source: Data as on Dec 31, 2025; NSE Indices Limited, **Past performance may or may not sustain in future.** The index return is in Total Return Variant. The data shown above pertains to the Index and does not in manner indicate performance of any scheme of the Fund. Value 50 is represented by Nifty500 Value 50 Index,

Mirae Asset Nifty 500 Value 50 ETF



NFO Period
March 9, 2026 to
March 16, 2026



Type of Scheme
An open-ended scheme
replicating/tracking Nifty 500 Value 50
Total Return Index



Benchmark
Nifty 500 Value 50 Total
Return Index



Fund Manager
Ms. Ekta Gala and
Mr. Akshay Udeshi



Minimum Investment during NFO
Rs. 5000/- and in multiples of Re. 1/-
thereafter.

PRODUCT LABELLING

Mirae Asset Nifty 500 value 50 ETF is suitable for investors who are seeking*

- Returns that are commensurate with the performance of Nifty 500 value 50 Total Return Index, subject to tracking error over long term.
- Investment in securities constituting in Nifty 500 value 50 Total Return Index.

*Investors should consult their financial advisors if they are not clear about the suitability of the product.

The above Product Labelling assigned during the New Fund Offer (NFO) is based on internal assessment of the scheme characteristics or model portfolio and the same may vary post NFO when the actual investments are made.

Index Disclaimer

NSE Indices Ltd Disclaimer: NSE INDICES LIMITED do not guarantee the accuracy and/or the completeness of the Nifty 500 Value 50 Index or any data included therein and NSE INDICES LIMITED shall have not have any responsibility or liability for any errors, omissions, or interruptions therein. NSEINDICES LIMITED does not make any warranty, express or implied, as to results to be obtained by the Issuer, owners of the product(s), or any other person or entity from the use of the Nifty 500 Value 50 Index or any data included therein. NSE INDICES LIMITED makes no express or implied warranties, and expressly disclaims all warranties of merchantability or fitness for a particular purpose or use with respect to the index or any data included therein. Without limiting any of the foregoing, NSE INDICES LIMITED expressly disclaim any and all liability for any claims, damages or losses arising out of or related to the Products, including any and all direct, special, punitive, indirect, or consequential damages (including lost profits), even if notified of the possibility of such damages.

Statutory Details: Trustee: Mirae Asset Trustee Company Private Limited; Investment Manager: Mirae Asset Investment Managers (India) Private Limited (AMC); Sponsor: Mirae Asset Global Investments Company Limited.

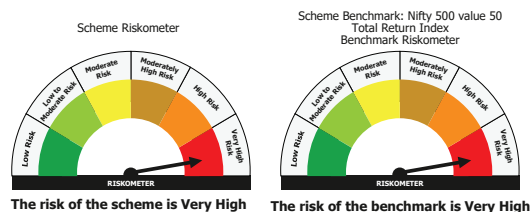
The information contained in this document is compiled from third party and publically available sources and is included for general information purposes only. There can be no assurance and guarantee on the yields. Views expressed by the Fund Manager cannot be construed to be a decision to invest. The statements contained herein are based on current views and involve known and unknown risks and uncertainties. Whilst Mirae Asset Investment Managers (India) Private Limited (the AMC) shall have no responsibility/liability whatsoever for the accuracy or any use or reliance thereof of such information. The AMC, its associate or sponsors or group companies, its Directors or employees accepts no liability for any loss or damage of any kind resulting out of the use of this document. The recipient(s) before acting on any information herein should make his/her/their own investigation and seek appropriate professional advice and shall alone be fully responsible / liable for any decision taken on the basis of information contained herein. Any reliance on the accuracy or use of such information shall be done only after consultation to the financial consultant to understand the specific legal, tax or financial implications.

For further information about other schemes (product labeling and performance of the fund) please visit the website
of the AMC: www.miraeassetmf.co.in

Please consult your financial advisor or mutual fund distributor before investing.

Mirae Asset ETF is a part of Mirae Asset Mutual Fund and is used for Exchange Traded Funds (ETF) managed by Mirae Asset Investment Managers (India) Private Limited.

Mutual Fund investments are subject to market risks, read all scheme related documents carefully.



Scan here for product details & disclaimers

