

INNOVATIVE DISRUPTIONS

#innovationforfuture

CALENDAR | **20**
PLANNER | **21**

From CEO's Desk

An unpredictable, testing and most importantly a stimulating year has passed. Welcoming this New Year, I wish that everyone is safe and equipped with an energizing and optimistic outlook for the coming year.

Even though it was a turbulent year, we at Mirae Asset have turned this challenging time into a great opportunity. We have launched 8 meaningful funds in past 12 months with each one of them being different from another and hence enhancing our product offerings significantly for the investor. Mirae Asset now desires to diversify its business activities in India and venture into other areas of Financial Services. It also reflects on the strong view that Mirae Asset Group has on India and the bright future business possibilities in India. Mirae Asset has witnessed a significant surge in the number of investor folios with more than 28 lakh (including more than 13 lakh+ SIP investors*). We have come a long way in the AMC ranking and now Mirae Asset has made its position strong amongst the top 15 AMCs of India².

Taking out positives of the situation, it is time to look at our business with new perspective and with a new ray of hope. It gives me great pleasure to introduce to you the theme of our calendar for 2021 Innovative Disruptions. Businesses are being disrupted at a faster pace than at any time in recent history. Today's truly disruptive companies are building their fortunes faster than ever before. Many of the next-generation disruptive trends like self-driving cars, genomics, and advanced computer chips are closer than you think. It is our honest attempt to capture upcoming innovations which have changed or may change our daily routine forever. To keep the curiosity going, we have created one quiz for each month. A QR code is labeled on each page to access the quiz of the month which will be live for first weekend of the month. I sincerely hope that you enjoy the quiz and also take a moment to think about all the innovations we are surrounded by.

Keeping the theme in mind, I would like to bring to your notice that we have also adapted the current need to be innovative with our product offering. In 2020 we launched India's first ESG ETF (Exchange Traded Fund) and Fund of Fund. We aim to present similar innovative products in 2021. We are foraying into Digital business extensively, from conducting virtual meetings to providing digital transactions, it is our continuous endeavor to add more convenience to you at every stage.

The past few years have had a significant impact on all of us, but I would like to thank you all for your significant support and dedication during these challenging times. The year ahead will bring its own challenges but I am sure by working together, keeping focus on our priorities and putting our investors first, we can realize our Goals.

Wish you all a very Happy New Year !!

Warm Regards,



Swarup Mohanty
Chief Executive Officer

Mutual fund investments are subject to market risks, read all scheme related documents carefully.

*As on 30th October 2020 \$ As on 30th November 2020

INNOVATIVE DISRUPTIONS



Disruption symbolizes uprooting of an event, activity or process either by innovation or due to lack of business acumen. Radio and TV are simplest examples of disruption or rather disruptive innovation changing the entire face of entertainment industry. The reason and need for the forward thought processes specify that organisations are never immune to disruptions. With this thought we encourage you to make some innovations in your life. To mark the day of innovations, we have added a sticker of breakthrough moments.

To read more about each innovation mentioned in the calendar, please scan the QR code. Here you will find interesting reports and articles and new innovations and its future prospects. Also on every 1st Friday of the month (starting 12.00a.m.), there will be a quiz which will be live for 1st weekend of the month (till Sunday, 11.59 p.m.). Every month you stand a chance to win exciting prizes*. That's not all, keep playing and track your score every month on the last page. At the end of the year, post the picture of your score card on our social media accounts with **#innovationforfuture** and stand a chance to win more prizes.



To know more
and participate in Quiz
Please Scan this QR code

*Terms and Condition apply

Electric Vehicle

All-electric vehicles (EVs), have an electric motor instead of an internal combustion engine. Pretty soon, seeing an electric car on the road will become as common as driving past a traffic light. The number of public charge points outnumber petrol stations in the UK. There are now 8,471 charging sites across the UK as opposed to 8,400 petrol stations.¹



More details

01 | JANUARY | 2021

S	M	T	W	T	F	S
.	1	2
3	4	5	6	7	8	9
10	11	12	13	14	15	16
17	18	19	20	21	22	23
24	25	26	27	28	29	30
31						





12 DECEMBER'20

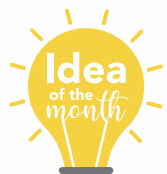
S M T W T F S
 1 2 3 4 5
 6 7 8 9 10 11 12
 13 14 15 16 17 18 19
 20 21 22 23 24 25 26
 27 28 29 30 31

1 JANUARY 2021

2 FEBRUARY

S M T W T F S
 1 2 3 4 5 6
 7 8 9 10 11 12 13
 14 15 16 17 18 19 20
 21 22 23 24 25 26 27
 28

SUNDAY	MONDAY	TUESDAY	WEDNESDAY	THURSDAY	FRIDAY	SATURDAY
					1 New Year	2
3	4	5	6	7	8  Innovation Quiz	9
10	11	12	13	14	15	16
17	18	19	20	21	22	23
24	25	26 Republic Day 	27	28	29	30
31						



Virtual Meeting

Video Conferencing Market size surpassed USD 14 billion in 2019 and is anticipated to grow at over 19% CAGR between 2020 and 2026. The advent of several technologies, such as cloud computing, IoT, AI, VR and advanced video compression, will drive the market growth.²



More details

02 | FEBRUARY | 2021

S	M	T	W	T	F	S
•	1	2	3	4	5	6
7	8	9	10	11	12	13
14	15	16	17	18	19	20
21	22	23	24	25	26	27
28						



1 JANUARY

S M T W T F S
 1 2
 3 4 5 6 7 8 9
 10 11 12 13 14 15 16
 17 18 19 20 21 22 23
 24 25 26 27 28 29 30
 31

2 FEBRUARY 2021

3 MARCH

S M T W T F S
 1 2 3 4 5 6
 7 8 9 10 11 12 13
 14 15 16 17 18 19 20
 21 22 23 24 25 26 27
 28 29 30 31

SUNDAY

MONDAY

TUESDAY

WEDNESDAY

THURSDAY

FRIDAY

SATURDAY

1

2

3

4

5



Innovation Quiz

6

7

8

9

10

11 Maha Shivaratri

12

13



14

15

16

17

18

19

20

21

22

23

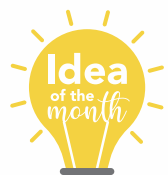
24

25

26

27

28



Cloud Computing

Cloud Computing is the practice of using a network of remote servers hosted on the internet to store, manage and process data, rather than a local server or a personal computer. 90% of Microsoft's R&D budget is being used to improve cloud technology and security services. For every 1200 smartphones or 600 tablets a new server is added to the cloud.³



More details

03 | MARCH | 2021

S	M	T	W	T	F	S
•	1	2	3	4	5	6
7	8	9	10	11	12	13
14	15	16	17	18	19	20
21	22	23	24	25	26	27
28	29	30	31			



2 FEBRUARY



S M T W T F S
 1 2 3 4 5 6
 7 8 9 10 11 12 13
 14 15 16 17 18 19 20
 21 22 23 24 25 26 27
 28

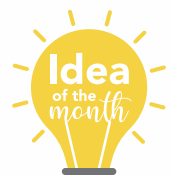
3

MARCH 2021

4 APRIL

S M T W T F S
 1 2 3
 4 5 6 7 8 9 10
 11 12 13 14 15 16 17
 18 19 20 21 22 23 24
 25 26 27 28 29 30

SUNDAY	MONDAY	TUESDAY	WEDNESDAY	THURSDAY	FRIDAY	SATURDAY
	1	2	3	4	5  Innovation Quiz	6
7	8	9	10	11	12	13
14	15	16	17	18	19	20
21	22	23	24	25	26	27
28	29 Holi 	30	31			



Artificial Intelligence

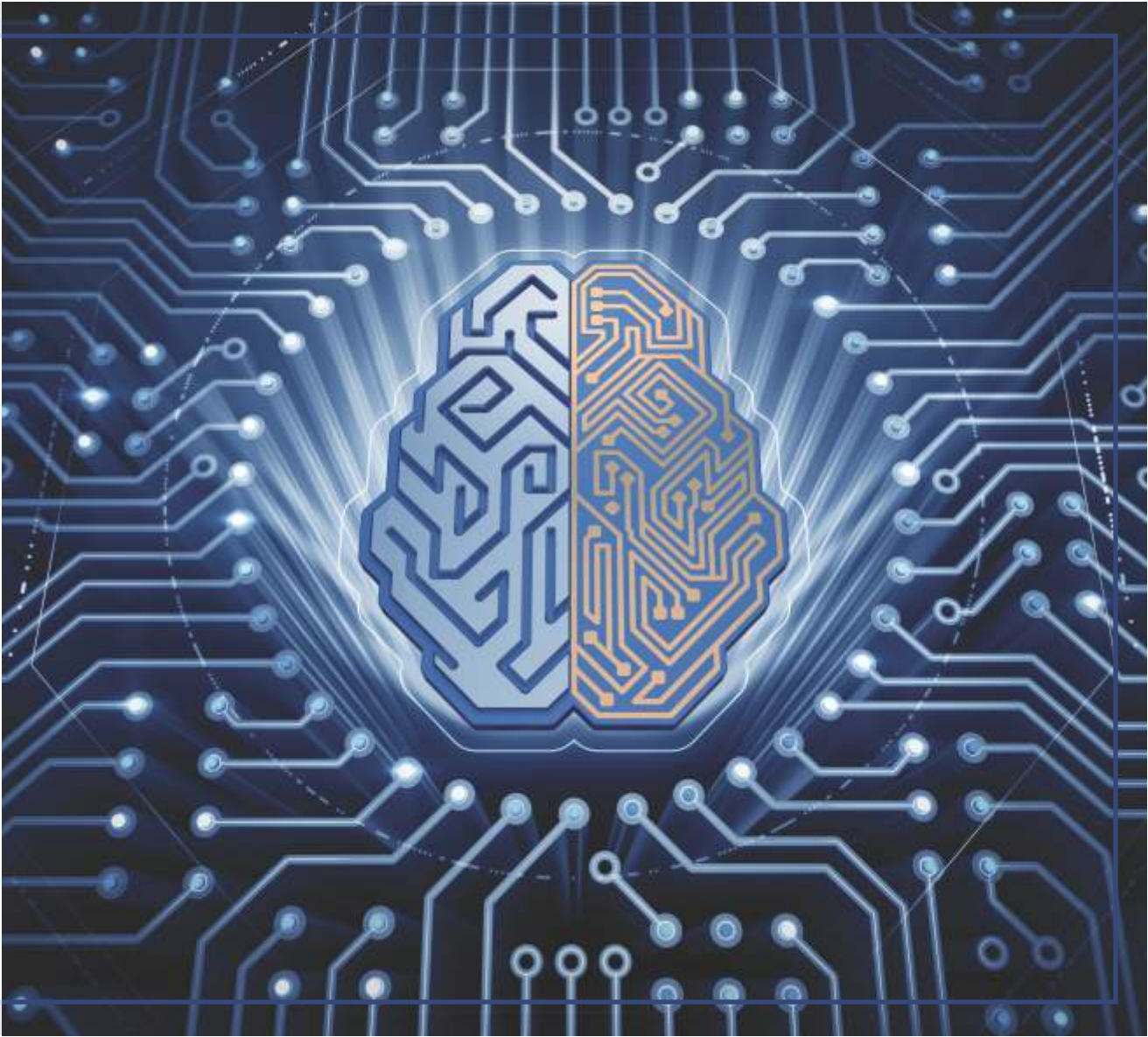
Artificial intelligence (AI) is wide-ranging branch of computer science concerned with building smart machines capable of performing tasks that typically require human intelligence. AI will contribute \$15.7 trillion to the global economy by 2030. AI will make products and services better and it's expected to boost North America's GDP by 14% by that year.⁴



More details

04 | **APRIL** | 2021

S	M	T	W	T	F	S
•	•	•	•	1	2	3
4	5	6	7	8	9	10
11	12	13	14	15	16	17
18	19	20	21	22	23	24
25	26	27	28	29	30	



3 MARCH

S M T W T F S
1 2 3 4 5 6
7 8 9 10 11 12 13
14 15 16 17 18 19 20
21 22 23 24 25 26 27
28 29 30 31

4 APRIL 2021

5 MAY

S M T W T F S
1
2 3 4 5 6 7 8
9 10 11 12 13 14 15
16 17 18 19 20 21 22
23 24 25 26 27 28 29
30 31

SUNDAY

MONDAY

TUESDAY

WEDNESDAY

THURSDAY

FRIDAY

SATURDAY

4

5

6

7

8

9

10

11

12

13

14 Dr. Ambedkar Jayanti

15

16

17

18

19

20

21 Ram Navami

22

23

24

25 Mahavir Jayanti

26

27

28

29

30



3D Printing

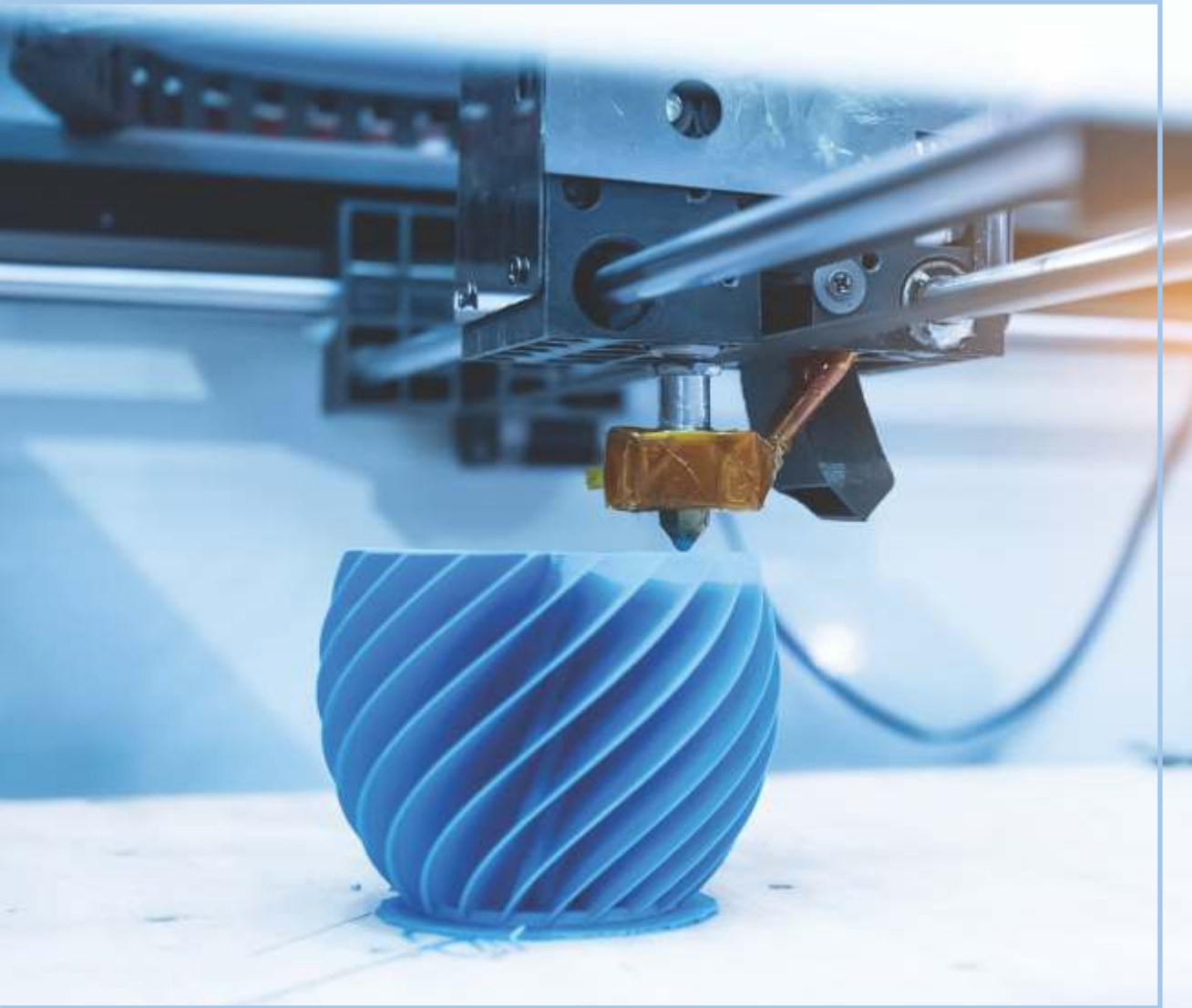
3D printing, also known as additive manufacturing, is a manufacturing process where a 3D printer creates three-dimensional objects by depositing materials layer by layer in accordance to the object's 3D digital model. 3D Printing in the construction industry means reduced production time. Indeed, machines themselves are very fast, some of them are capable of manufacturing a 600 to 800-square-foot (55 to 75-square-meters) home in just 24 hours.⁵



More details

05 | MAY | 2021

S	M	T	W	T	F	S
.	1
2	3	4	5	6	7	8
9	10	11	12	13	14	15
16	17	18	19	20	21	22
23	24	25	26	27	28	29
30	31					



4 APRIL

S M T W T F S
 1 2 3
 4 5 6 7 8 9 10
 11 12 13 14 15 16 17
 18 19 20 21 22 23 24
 25 26 27 28 29 30

5 MAY 2021

6 JUNE

S M T W T F S
 1 2 3 4 5
 6 7 8 9 10 11 12
 13 14 15 16 17 18 19
 20 21 22 23 24 25 26
 27 28 29 30

SUNDAY

MONDAY

TUESDAY

WEDNESDAY

THURSDAY

FRIDAY

SATURDAY

1 Labor Day



2

3

4

5

6

7



Innovation Quiz

8

9

10

11

12 Eid al-Fitr



13

14

15

16

17

18

19

20

21

22

23

24

25

26

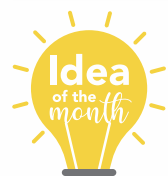
27

28

29

30

31



Passive Investing

Exchange Traded Funds (ETFs) are basket of securities that can be traded on stock exchange, like an individual stock. Generally, ETFs are constructed for replicating the portfolio and performance of publicly available index. In last decade (2010-2020) or so where AUM of ETF has grown by USD 5 trillion to USD 7 trillion, which is at least twice the size of India's GDP. It is expected to cross USD 50 trillion by next decade i.e. by 2030.⁶



More details

06 | JUNE | 2021

S	M	T	W	T	F	S
.	.	1	2	3	4	5
6	7	8	9	10	11	12
13	14	15	16	17	18	19
20	21	22	23	24	25	26
27	28	29	30			



5 MAY

S M T W T F S
1
2 3 4 5 6 7 8
9 10 11 12 13 14 15
16 17 18 19 20 21 22
23 24 25 26 27 28 29
30 31

6 JUNE 2021

7 JULY

S M T W T F S
1 2 3
4 5 6 7 8 9 10
11 12 13 14 15 16 17
18 19 20 21 22 23 24
25 26 27 28 29 30 31

SUNDAY

MONDAY

TUESDAY

WEDNESDAY

THURSDAY

FRIDAY

SATURDAY

1

2

3

4



Innovation Quiz

5

6

7

8

9

10

11

12

13

14

15

16

17

18

19

20

21

22

23

24

25

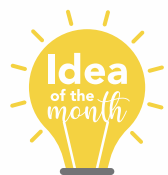
26

27

28

29

30



Internet of Things

The IoT: A theme of themes.
The Internet of Things (IoT) refers to devices such as cell phones, vehicles, electronic appliances and smart sensors that are connected to a wireless network. The APAC region is forecasted to become the largest global IoT region in terms of both connections and revenue by 2025 with India expected to have 5 billion connected devices by 2022.⁷



More details

07 | JULY | 2021

S	M	T	W	T	F	S
.	.	.	.	1	2	3
4	5	6	7	8	9	10
11	12	13	14	15	16	17
18	19	20	21	22	23	24
25	26	27	28	29	30	31



6 JUNE

S M T W T F S
 1 2 3 4 5
 6 7 8 9 10 11 12
 13 14 15 16 17 18 19
 20 21 22 23 24 25 26
 27 28 29 30

7 JULY 2021

8 AUGUST

S M T W T F S
 1 2 3 4 5 6 7
 8 9 10 11 12 13 14
 15 16 17 18 19 20 21
 22 23 24 25 26 27 28
 29 30 31

SUNDAY

MONDAY

TUESDAY

WEDNESDAY

THURSDAY

FRIDAY

SATURDAY

4

5

6

7

8

9

10

11

12

13

14

15

16

17

18

19

20

21 Eid al-Adha
(Bakari Eid)

22

23

24

25

26

27

28

29

30

31



Innovation Quiz



Telemedicine

Telemedicine offers an alternative solution to in-person doctor visits, providing diagnostic and clinical services to patients around-the-clock, from the convenience of one's home or workplace. Telemedicine and Digital Health has received significant attention throughout the COVID-19 pandemic. The global telehealth and telemedicine market is expected to grow at a CAGR of 37.7%, to reach USD 191.7 billion by 2025 from an estimated USD 38.7 billion in 2020.⁸



More details

08 | **AUGUST** | 2021

S	M	T	W	T	F	S
1	2	3	4	5	6	7
8	9	10	11	12	13	14
15	16	17	18	19	20	21
22	23	24	25	26	27	28
29	30	31				



7 JULY

S M T W T F S
 1 2 3
 4 5 6 7 8 9 10
 11 12 13 14 15 16 17
 18 19 20 21 22 23 24
 25 26 27 28 29 30 31

8 AUGUST 2021

9 SEPTEMBER

S M T W T F S
 1 2 3 4
 5 6 7 8 9 10 11
 12 13 14 15 16 17 18
 19 20 21 22 23 24 25
 26 27 28 29 30

SUNDAY

1

8

15 Independent Day



22

29

MONDAY

2

9

16

23

30

TUESDAY

3

10

17

24

31

WEDNESDAY

4

11

18

25

THURSDAY

5

12

19 Moharrum



26

FRIDAY

6



Innovation Quiz

13

20

27

SATURDAY

7

14

21

28



Robotics

Robotics is an interdisciplinary research area at the interface of computer science and engineering. Robotics develops machines that can substitute for humans and replicate human actions. Agriculture will also see a robotics-driven revolution with automated spraying, monitoring and picking likely resulting in reduced costs and improved crop yields.⁹



More details

09 | **SEPTEMBER** | 2021

S	M	T	W	T	F	S
•	•	•	1	2	3	4
5	6	7	8	9	10	11
12	13	14	15	16	17	18
19	20	21	22	23	24	25
26	27	28	29	30		



8 AUGUST

S M T W T F S
 1 2 3 4 5 6 7
 8 9 10 11 12 13 14
 15 16 17 18 19 20 21
 22 23 24 25 26 27 28
 29 30 31

9

SEPTEMBER 2021

10 OCTOBER

S M T W T F S
 1 2
 3 4 5 6 7 8 9
 10 11 12 13 14 15 16
 17 18 19 20 21 22 23
 24 25 26 27 28 29 30
 31

SUNDAY	MONDAY	TUESDAY	WEDNESDAY	THURSDAY	FRIDAY	SATURDAY
			1	2	3  Innovation Quiz	4
5	6	7	8	9	10 Ganesh Chaturthi 	11
12	13	14	15	16	17	18
19	20	21	22	23	24	25
26	27	28	29	30		



Social Media

In the age of desktop computers, social media was a log of what happened in the past - a collection of experiences uploaded after the fact. As social media shift to the smartphone, however, it became an instantaneous broadcast of life experiences. The number of global social media users increased from 970 million people in 2010 to 2.96 billion in 2020 and is expected to grow. The average internet user has 7.6 social media accounts and almost 8 billion videos are viewed daily on Facebook.¹⁰



More details

10 | OCTOBER | 2021

S	M	T	W	T	F	S
.	1	2
3	4	5	6	7	8	9
10	11	12	13	14	15	16
17	18	19	20	21	22	23
24	25	26	27	28	29	30
31						



9 SEPTEMBER

S M T W T F S
 1 2 3 4
 5 6 7 8 9 10 11
 12 13 14 15 16 17 18
 19 20 21 22 23 24 25
 26 27 28 29 30

10 | OCTOBER 2021

11 NOVEMBER

S M T W T F S
 1 2 3 4 5 6
 7 8 9 10 11 12 13
 14 15 16 17 18 19 20
 21 22 23 24 25 26 27
 28 29 30

SUNDAY

MONDAY

TUESDAY

WEDNESDAY

THURSDAY

FRIDAY

SATURDAY

3

4

5

6

7

8

9

10

11

12

13

14

15 Dussehra

16

17

18

19

20

21

22

23

24

25

26

27

28

29

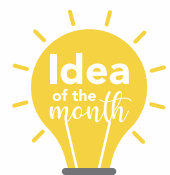
30

31



Innovation Quiz

2 Mahatma Gandhi
Jayanti



E-Commerce

From pins to aeroplanes, everything is available online today. The Indian e-commerce industry is expected to surpass its competitors China and US by the year 2034. The expected growth by 2026 is predicted to be US\$ 200 billion.¹¹



More details

11 | **NOVEMBER** | 2021

S	M	T	W	T	F	S
•	1	2	3	4	5	6
7	8	9	10	11	12	13
14	15	16	17	18	19	20
21	22	23	24	25	26	27
28	29	30				







10 OCTOBER

S M T W T F S
 1 2
 3 4 5 6 7 8 9
 10 11 12 13 14 15 16
 17 18 19 20 21 22 23
 24 25 26 27 28 29 30
 31

11 NOVEMBER 2021

12 DECEMBER

S M T W T F S
 1 2 3 4
 5 6 7 8 9 10 11
 12 13 14 15 16 17 18
 19 20 21 22 23 24 25
 26 27 28 29 30 31

SUNDAY	MONDAY	TUESDAY	WEDNESDAY	THURSDAY	FRIDAY	SATURDAY
	1	2	3	4 Diwali 	5 Diwali   Innovation Quiz	6
7	8	9	10	11	12	13
14	15	16	17	18	19 Guru Nanak Jayanti 	20
21	22	23	24	25	26	27
28	29	30				



Digital Currency

Digital currency is a form of currency that is available only in digital or electronic form, and not in physical form. The most successful and widely used form of digital money is the cryptocurrency Bitcoin. Bitcoin sported a market value of over \$2 billion at its peak.¹²



More details

12 | **DECEMBER** | 2021

S	M	T	W	T	F	S
•	•	•	1	2	3	4
5	6	7	8	9	10	11
12	13	14	15	16	17	18
19	20	21	22	23	24	25
26	27	28	29	30	31	



11 NOVEMBER

S M T W T F S
 1 2 3 4 5 6
 7 8 9 10 11 12 13
 14 15 16 17 18 19 20
 21 22 23 24 25 26 27
 28 29 30

12 DECEMBER 2021

1 JANUARY'22

S M T W T F S
 1
 2 3 4 5 6 7 8
 9 10 11 12 13 14 15
 16 17 18 19 20 21 22
 23 24 25 26 27 28 29
 30 31

SUNDAY

MONDAY

TUESDAY

WEDNESDAY

THURSDAY

FRIDAY

SATURDAY

5

6

7

8

9

10

11

12

13

14

15

16

17

18

19

20

21

22

23

24

25 Christmas



26

27

28

29

30

31



Innovation Quiz

Monthly Quiz Score	
Month	Your Score
January	
February	
March	
April	
May	
Jun	
July	
August	
September	
October	
November	
December	
Total	



Disclaimers:

*Days on which the offices are closed, based on Bloomberg; but may change according to the circumstances of each country.

Images/picture are sourced from www.shutterstock.com & www.123rf.com. Indian Holidays are sourced from Google.

Source of the data mention:

1. Zap Map 2. Global Market Insights Report 3. Forbes, Indiainc 4. APwC report 5. Sculpteo 6. Bank of America Report 7. Express Computers 8. Markets and Markets 9. Global X
10. "Number of global social network users 2010-2021," Search Engine Journal 11. Ohoshop 12. Investopedia

**Anniversaries /
Birthdays**



Celebrations



**Breakthrough/
Innovation
Moment**



On Leave



Travel

