



Combination of Large, Mid & Small cap companies for your investment appetite.

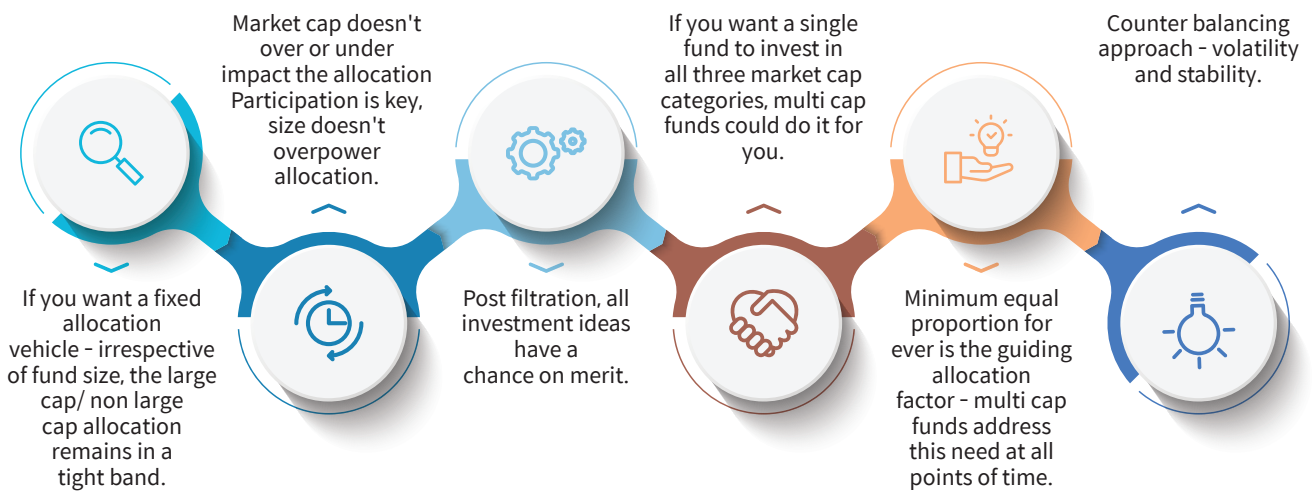
Mirae Asset Multicap Fund

(Multi Cap - An open-ended equity scheme investing across large cap, mid cap and small cap stocks)

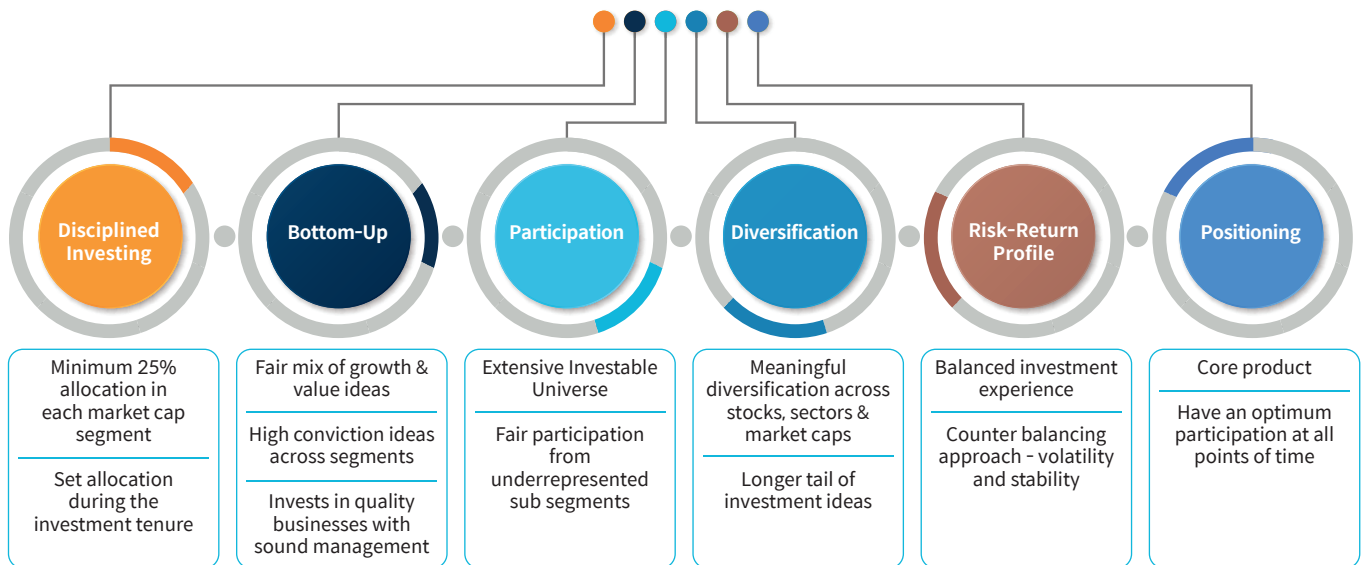
Data as on 31st March, 2024

Net AUM: 2488.33 INR Cr.

WHY AN INVESTOR COULD CONSIDER INVESTING IN A MULTICAP FUND



WHAT MIRAE ASSET MULTICAP FUND (MAMPF) AIMS TO DELIVER



WHO MAY INVEST IN THE FUND

First Time Investors & Millennials

Investors in the process of creating / reviewing their core equity portfolio and yet to commence SIP could look at multi cap fund as it gives exposure across market cap spectrum.

Long tenure

Multicap funds are designed for investors who have ideally 5 years & above investment horizon.

Consolidation

Any investor looking for lesser number of schemes in their portfolio or having multiple investments across different market cap oriented schemes could consider multi cap fund as it could be single scheme investment vehicle to invest in all market caps.

Participation

Any investor wanting an unbiased flavor of market caps and an equal participation in large and non large market cap segments over the life of their investment.

PORTFOLIO DETAILS FOR MAMPF ARE GIVEN BELOW

Top 10 Stock Holdings*#

Holdings	%
HDFC Bank Limited	4.56%
Axis Bank Limited	2.89%
ICICI Bank Limited	2.88%
Larsen & Toubro Limited	2.86%
State Bank of India	2.67%
Reliance Industries Limited	2.45%
NTPC Limited	2.11%
Gland Pharma Limited	2.10%
Kotak Mahindra Bank Limited	2.05%
Gujarat State Petronet Limited	2.01%
Total	26.57%

Top 10 Sector Holdings*#

Holdings	Mar 2024	Feb 2024
Banks	18.81%	18.75%
Pharmaceuticals & Biotechnology	7.21%	6.42%
Consumer Durables	6.42%	7.10%
IT - Software	6.31%	7.01%
Auto Components	4.94%	4.61%
Finance	4.75%	4.14%
Transport Services	4.56%	4.81%
Retailing	3.77%	3.61%
Petroleum Products	3.06%	1.90%
Construction	2.86%	2.77%
Total	62.67%	61.12%

FUND DETAILS

Fund Manager: Mr. Ankit Jain

Allotment Date: 21st August, 2023

Benchmark: Nifty 500 Multicap 50:25:25 TRI Index

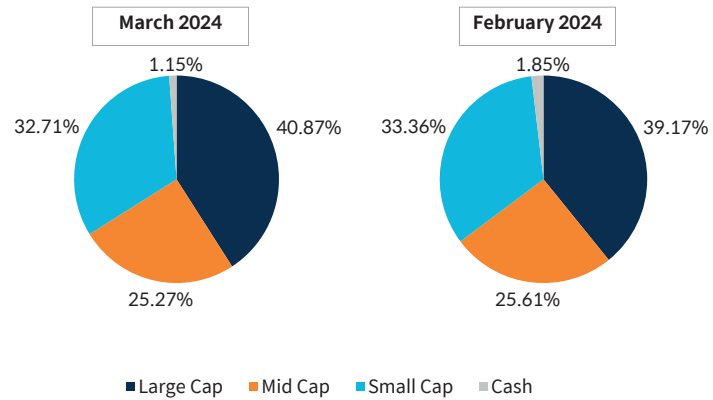
Plans Available: Regular Plan and Direct Plan.

SIP Amount: Monthly and Quarterly: ₹500/- (multiples of ₹1/- thereafter), minimum 5 in case of Monthly / Quarterly option.

Minimum Investment Amount: For NFO & ongoing offer period, ₹5,000/- and in multiples of ₹1/- thereafter.

Load Applicable: Entry Load – Nil Exit Load(*for SWP see below) - If redeemed within 1 year (365 days) from the date of allotment: 1% of the applicable NAV If redeemed after 1 year (365 days) from the date of allotment: NIL

MARKET CAPITALIZATION^



MARKET OUTLOOK~

- 2023 was characterised by continual of the rate hike cycle by major central banks barring economies like - China and Japan. While US economy defied expectations of a soft or hard landing, other economies like - Europe and UK grappled with the adverse impact of monetary tightening on the economic growth.
- Containing and bringing inflation within the targeted levels still remains the top priority for US, Europe and UK. While inflation in these economies has moderated significantly, it still remains above their comfort zone. The timing and quantum of rate cuts going into 2024 would be keenly watched by financial markets.
- An extended rate hike cycle may lead to unintended consequences and adversely impact the global economic growth. On the other hand, a premature reversal in rate cycle may lead to the core issue (inflation) remaining unaddressed in entirety.

*Pursuant to Clause 2.7 of Part IV of SEBI Master Circular dated May 19, 2023, the universe of "Mid Cap" shall consist of 101st to 250th company, "Large Cap" shall consist of top 100 companies, "Small Cap" shall consist of 251st and onwards companies in terms of full market capitalization.

#Portfolio may or may not remain the same. For complete monthly portfolio, please visit the website: [miraeeasetsmf.co.in/downloads/portfolio](https://www.miraeeasetsmf.co.in/downloads/portfolio).

**The sector(s)/stock(s)/issuer(s) mentioned in this presentation do not constitute any research report/recommendation of the same and the fund may or may not have any future position in these sector(s)/stock(s)/issuer(s) For complete portfolio of the scheme, please visit the website <https://www.miraeeasetsmf.co.in/downloads/portfolio>.

**Pursuant to notice cum addendum no. 69/2023, Minimum Systematic Investment Plan (SIP) Installment amount for certain Schemes has been Changed with effect from January 01, 2024.

~Disclaimer: Views expressed by the Fund Manager cannot be construed to be a decision to invest. The statements contained herein are based on current views and involve known and unknown risks and uncertainties. Whilst Mirae Asset Investment Managers (India) Private Limited (the AMC) shall have no responsibility/liability whatsoever for the accuracy or any use or reliance thereof of such information. The AMC, its associate or sponsors or group companies, its Directors or employees accept no liability for any loss or damage of any kind resulting out of the use of this document.

PRODUCT LABELLING

Mirae Asset Multicap Fund is suitable for investors who are seeking*

- To generate long term capital appreciation / income
- Investments predominantly in equity and equity related securities of large cap / mid cap / small cap companies.

*Investors should consult their financial advisors if they are not clear about the suitability of the product.

For further information about other schemes (product labelling and performance of the fund) please visit the website of the AMC: www.miraeeasetsmf.co.in

Follow us on     

Mutual Fund investments are subject to market risks, read all scheme related documents carefully.

1800-2090-777 (Toll Free) Mon-Sat: 9 am-6 pm

 customercare@miraeeasetsmf.com

 Contact your financial advisor or mutual fund distributor for details